



Essential Oil
Scented Candle
Sented Handmade Soap



ARK Aromatherapy Framework

Holistic integration of TCM + Western aromatherapy 3

Mythical Beast Origin Story

Sacred woods · Culture · Energy symbolism 4

Mythical Beast — Essential Oils

Energy · Archetypes · Mood regulation 5

The Five Elements — The System

Wood · Fire · Earth · Metal · Water 6

The Five Elements — Essential Oils

Organ · Emotion · Seasonal regulation 7–9

Mythical Beast — Handmade Soaps

Forest ritual & tactile aromatics 10–11

Bath Ritual Collection

Bath bombs for emotion & body recovery 12

Candle Collection

Fire · Intention · Atmosphere 13

Herbal Tea Collection

Elemental nourishment & after-healing support 14

Freeze-Dried Fruits

Clean nutrition for recovery & vitality 15





Ark's Original Intention

Do you love the scents of nature?

Do you know how many treasures nature holds? Now, I use essential oils as my pen, using fragrance to write my own story about nature in literature, But we can see the dimension of time, and experiencing fragrance is not only an outlet for emotions, also a ritual of self-renewal. Transcending cultural and geographical limitations, listening to the language hidden in the aromatic molecules of all things, fragrance is not just an olfactory art, but also a stage for dialogue with flowers, plants, and trees.

By connecting our emotions to the natural world, we infuse these scents into bottles, creating microcosms within each fragrance. Each aroma formula has its own story and meaning. From the physical and mental challenges of life and their solutions, to the correspondence between essential oils and inner personality, it not only integrates the connection of perception but also transforms and refines the self. The magic of these natural elements is ineffable; they can be named and extended in any way—but naming it after the Five Elements is truly fitting.

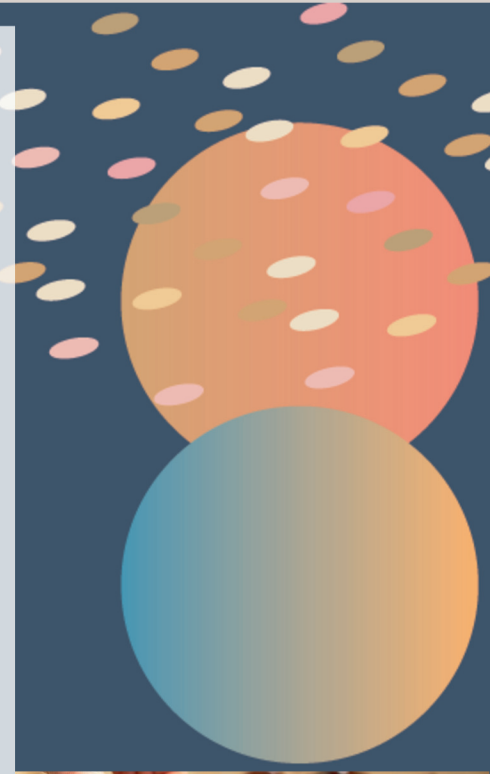
It is—the Ark of life

Everyone has their own Five Elements. Besides Five Elements essential oils, Ark also has a mysterious Eastern wood-toned series.

From essential oils to handmade soaps, bath bombs, massage oils, scented candles, and even fruit and herbal teas and dried natural fruits, this entire feast for the mind and body awaits your experience.

My greatest initial intention is to give everyone more opportunities to understand the scents of nature and move towards a healthy and happy life—because scents guide emotions, and emotions are the guide of life.

These two Series of essential oils is suitable for everyone, allowing you to DIY and use different combinations according to your own situation to achieve a satisfying experience.





Why the “Mythical Beast Collection” Was Born

The Mythical Beast Collection is ARK’s most iconic creation, born from four core intentions:

1. The Power of Sacred Woods

Using century-old Eastern woods, each scent carries the blessing of earth, time, and nature.

2. Symbols of Protection & Auspice

Named after the Azure Dragon, White Tiger, Phoenix, Xuanwu, and Kirin—representing protection, balance, rebirth, and wisdom for modern life.

3. Where Science Meets Mysticism

The formulas combine aromatic chemistry with cultural symbolism, creating healing on both physical and emotional levels.

4. Returning the Forest to the City

Through scent, the ancient forest becomes accessible again—bringing calm, stability, and inner quiet to urban living.

The collection is ARK’s tribute to Eastern natural philosophy:

blending sacred wood, mythical symbolism, and aromatic experience to guide users from relaxation to emotional alignment and spiritual awareness.

Note:

Dilution Ratios

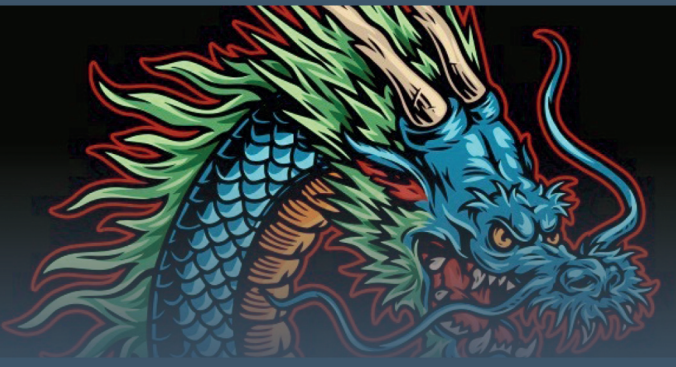
- Adults : 3–5%
- Gentle Care (Children, Elderly, Recovery) : < 3%

Example

10ml base oil = 6–10 drops (adult) / ≤6 drops (gentle care)

Mythical Beast Collection

For Energy · Mood · Symbolism



Azure Dragon (Wood Element)

Benefits:

- Promotes deep relaxation & better sleep
- Calms emotions and soothes anxiety
- Restores inner balance & heart-chakra harmony

Ingredients:

Sandalwood, Indian Frankincense, Lemon
Warm woody base with soft citrus freshness



Phoenix Essential Oil (Fire)

Benefits:

- Boosts vitality & inner motivation
- Relieves stress and uplifts mood
- Enhances circulation & energizes the body

Ingredients:

Red Cypress, Rosemary Verbenone, Red Tangerine
Warm, bright, smoky-woody with citrus sparks



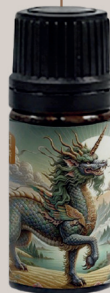
Kirin Essential Oil (Earth)

Benefits:

- Calms the mind & relieves stress
- Strengthens confidence & willpower
- Supports emotional stability & wealth-energy

Ingredients:

Agarwood, Agarwood Seeds, Patchouli
Rich, warm, earthy-sweet oriental wood aroma



White Tiger Essential Oil (Metal)

Benefits:

- Clears the mind & enhances focus
- Reduces stress and emotional tension
- Purifies energy & strengthens intuition

Ingredients:

Taiwanese Cedar, Rosewood, Laurel
Fresh, cool, forest-like woody scent



Xuanwu Essential Oil (Water)

Benefits:

- Enhances communication & clarity
- Supports emotional stability
- Purifies energy & improves concentration

Ingredients:

Taiwanese Xiaonan, Juniper Berry, Roman Chamomile
Deep, grounding, resin-woody with soft herbal notes





The Five-Elements Collection

A sensory ritual for balance and renewal.

In ARK, scent is treated as language — a way for nature to speak to the body.

Each formula in the Five-Elements Collection draws from the ancient Chinese system of Wood • Fire • Earth • Metal • Water, where emotion, organ function, and seasonal rhythm form a single continuum.

This collection pairs Eastern medicinal philosophy with Western aromatherapy, allowing scent to regulate mood while supporting the body's natural cycles.

The Elements

Wood — Calm & Restoration

Soothes the nervous system. Eases sleep and resets the mind.

Fire — Circulation & Vitality

Warms the body, awakens movement and emotional expression.

Earth — Stability & Digestion

Centers the body. Grounds the mind. Restores internal harmony.

Metal — Immunity & Clarity

Purifies the respiratory system. Sharpens perception.

Water — Emotional Depth

Softens tension. Supports hormonal and feminine balance.

A Ritual of Self-Regulation

In practice, the Five Elements become a quiet method of attunement:

When scent steadies emotion, emotion guides wellbeing.

Through daily use, the body reclaims balance,

not by force, but by invitation.

Note:

Dilution Ratios

- Adults : 3–5%
- Gentle Care (Children, Elderly, Recovery) : < 3%

Example

10ml base oil = 6–10 drops (adult) / ≤6 drops (gentle care)

Five Elements Collection

For Balance · Wellness · Organ Support



Wood Element



Benefits:

- Reduces stress & emotional tension
- Improves sleep & nervous system regulation
- Supports circulation & vitality restoration

Ingredients:

Sandalwood · Himalayan Cedarwood · Goldenrod

Warm woody base with soft herbal citrus freshness



Fire Element



Benefits:

- Relieves muscle & body soreness
- Supports metabolism & heat circulation
- Uplifts mood & emotional balance

Ingredients:

Litsea Cubeba (Magao) · Cinnamon Bark · Bergamot

Warm spicy citrus with energizing heat



Earth Element



Benefits:

- Supports digestion & stomach discomfort
- Warms cold extremities & improves circulation
- Balances immune & nervous systems

Ingredients:

Ginger · Sweet Basil · Patchouli

Warm earthy herbaceous aroma with grounding depth



Metal Element



Benefits:

- Supports respiratory function & airway clarity
- Boosts immunity & recovery
- Calms inflammation & stress response

Ingredients:

Myrrh · Eucalyptus Radiata · Frankincense

Crisp resinous aroma with clean herbal freshness



Water Element



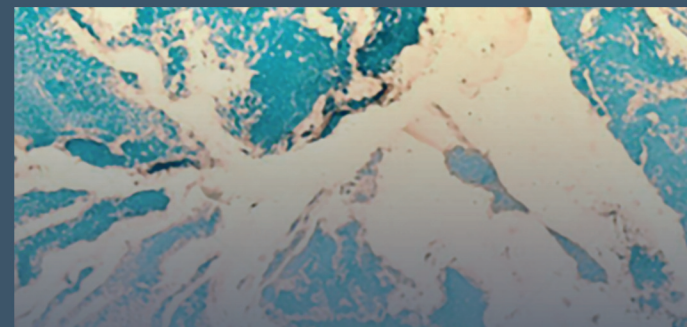
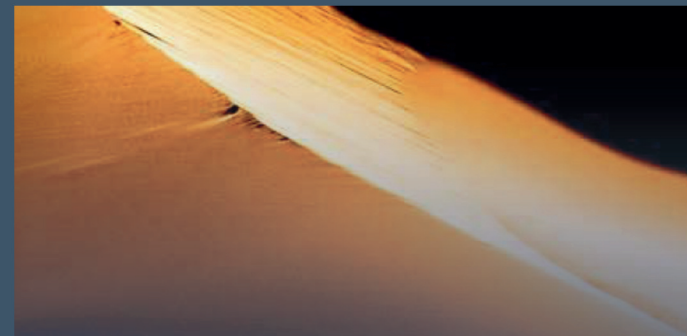
Benefits:

- Regulates women's physiological balance
- Reduces anxiety & deep emotional tension
- Improves sleep & endocrine harmony

Ingredients:

Rose · Vetiver · Clary Sage

Soft floral-earth aroma with grounding tranquility





Five Elements Collection

Balance the body through daily cleansing rituals

ARK's Five Elements Essential Oils are blended to match individual needs and emotions.

They can be mixed into soaps, bath products, or candles, supporting relaxation and overall well-being.



Wood Element

Supports: Stress relief · Mood · Energy circulation

Generating Pair: Water → Wood

Controlling Pair: Wood → Earth



Fire Element

Supports: Circulation · Metabolism · Emotional vitality

Generating Pair: Wood → Fire

Controlling Pair: Fire → Metal



• Diffuse

2 drops (Element) + 8 drops
(Generating Element)



• Topical

2 drops (Element) + 8 drops
(Generating Element)

+ 10ml carrier oil

Usage Ritual

Blend according to the nourishing cycle of the Five Elements:

- ✓ Diffuse: 2 + 8 drops
- ✓ Topical: 2 + 8 + 10ml carrier oil

Apply to chest & abdomen for optimal absorption & balance.
Best used during shower or bedtime for maximum grounding & balance.





Earth Element

Supports: Digestion · Immunity ·
Grounding · Dampness regulation
Generating Pair: Fire → Earth
Controlling Pair: Earth → Water



Metal Element

Supports: Respiratory health · Immune defense · Letting go
Generating Pair: Earth → Metal
Controlling Pair: Metal → Wood



Water Element

Supports: Hormonal balance ·
Nervous system · Adrenal recovery
Generating Pair: Metal → Water
Controlling Pair: Water → Fire



Mythical Beast Collection

A premium collection inspired by the Five Eastern Mythical Beasts, blending sacred woods and Oriental symbolism. Each beast represents an elemental force, emotional archetype, and sensory experience.





Azure Dragon – Wood | East

Theme: Renewal · Vitality · Awakening

Aroma: Sandalwood with soft citrus brightness

Mood: Calming & balancing

Effect Essence: Restores vitality, eases anxiety,
and harmonizes the heart.

Phoenix – Fire | South

Theme: Rebirth · Passion · Movement

Aroma: Red cypress with warm woody spice

Mood: Energizing & uplifting

Effect Essence: Ignites emotional vitality
and inspires action.



White Tiger – Metal | West

Theme: Clarity · Precision · Confidence

Aroma: Taiwanese cedar — clean & crisp

Mood: Cooling & refreshing

Effect Essence: Clears the mind, sharpens focus,
and restores confidence.

Xuanwu – Water | North

Theme: Depth · Protection · Stillness

Aroma: Xiao Nan wood — gentle & warm

Mood: Soothing & stabilizing

Effect Essence: Quiet like mountain mist; cultivates peace
and emotional introspection.



Kirin – Earth | Center

Theme: Harmony · Prosperity · Compassion

Aroma: Agarwood — deep & resinous

Mood: Grounding & comforting

Effect Essence: Inclusive and steady; restores inner richness
and steady confidence.





Transform bathing into a sensory ritual

ARK bath bombs are formulated with elemental botanicals and pure essential oils to support body–mind harmony. As the bomb dissolves, warm steam carries the aroma, tension melts, and the spirit resets.



Mythical Beast Collection

Aromatic bath bombs formulated with the Five-Elements system to support body regulation, emotional balance, and sensory restoration during bathing.



Five Elements Collection

Infused with elemental botanicals to calm the mind, nourish the body, and reset your energy through bathing.





Mythical Beast Candle Collection

Sacred Eastern woods × auspicious symbols.

A sensory ritual for grounding, clarity and emotional balance.

- **Azure Dragon — Wood**

Sandalwood and citrus smoothing the spirit and settling the breath.

- **White Tiger — Metal**

Pale cedar with a menthol edge sharpening focus and perception.

- **Phoenix — Fire**

Resin and spice rousing movement, warmth and renewal.

- **Kirin — Earth**

Rounded oud and soil sweetness grounding the body toward calm.

- **Xuanwu — Water**

Dark woods inviting stillness, introspection and quiet wisdom.



The Five Elements Collection

Shadowed woods inviting introspection and stillness.

- **Wood — Calm & Renewal**

Warm woods easing tension and supporting restful sleep.

- **Fire — Warmth & Circulation**

Spiced citrus stirring metabolism and physical drive.

- **Earth — Comfort & Digestion**

Gingered earth calming nerves and grounding the center.

- **Metal — Clarity & Immunity**

Resin and eucalyptus clearing the breath and refining resilience.

- **Water — Stillness & Female Balance**

Floral herbals soothing hormones and emotional tides.





100% Natural Freeze-Dried Fruits

Within ARK's philosophy, scent clarifies the mind while nutrition restores the body. The freeze-dried fruits serve as the latter—quiet carriers of vitamins, minerals, and natural sugars that replenish what stress depletes.

Unflavored, unmixed, and unadorned, they retain the color and temperament of their origins, reflecting the Five-Elements palette.

Taken after moments of rest or reflection, they return vitality to the system with discreet precision.

In this ritual, nourishment becomes part of the healing continuum: from breath, to emotion, to digestion, to renewal.

- No additives. No preservatives. No artificial flavoring.
- Just pure fruit — crisp, light, and nutrient-rich.






Element Herbal teas


In ARK's holistic philosophy, scent calms the mind, while nutrition restores the body. The fruit & herbal teas complete this ritual through internal replenishment—supporting digestion, circulation, emotional regulation, and gentle hydration. Free of artificial sweeteners or additives, each infusion highlights the natural sweetness of dried fruit and the light aromatic note of botanicals, offering a clean and modern wellness beverage aligned with ARK's Five-Elements approach to balance.





 WhatsApp



 Art From The God

Precious Co., Ltd
Email: precious.co@gmail.com
Tel: +886 2 22150487